



⬅ Back to my courses

RC Excavator - How To

69% COMPLETE

What We're Building ∨

Sourcing Parts ∨

Soldering ∨

Uploading Code to ESP32 ∨

3D Printing ∨

Assembling Lower Body & Track Support ∨

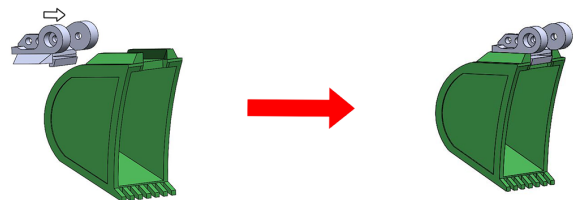
Bucket Assembly

Parts Required

- 2x 2.6x6mm Screws
- 4x 2.6x8mm Screws
- 2x 2.6x10mm Screws
- 1x 3D Printed Quick Attach-er
- 1x 3D Printed Bucket
- 1x 3D Printed Bucket Swing Arm
- 1x 3D Printed Bucket Push Link
- 1x 3D Printed

STEPS

1.) Start by pressing the bucket onto the quick attach-er.



2.) Secure the bucket swing arm to the dipper using 2 2x6mm screws.

Arm Assembly ^

- ✓ Motor Holders and Push Rods
- ✓ Boom & Dipper Assembly

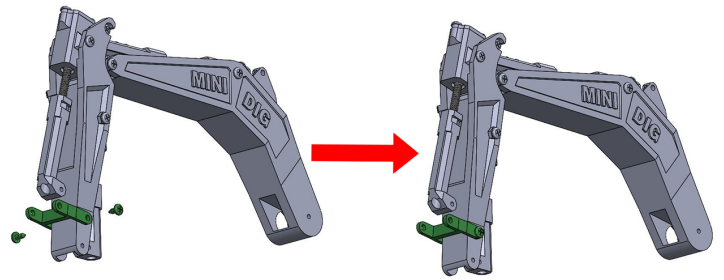
Bucket Assembly

- ✓ Thumb Assembly
- ✓ Securing Arm to Chassis
- ✓ Main Boom N20 motor
- ✓ Routing Wires

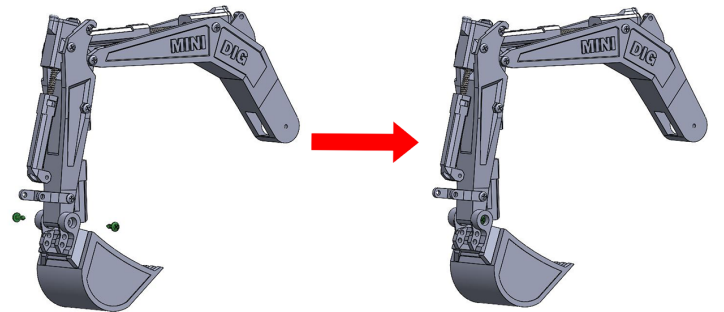
Cab Lights and Rear Cover v

Test Drive v

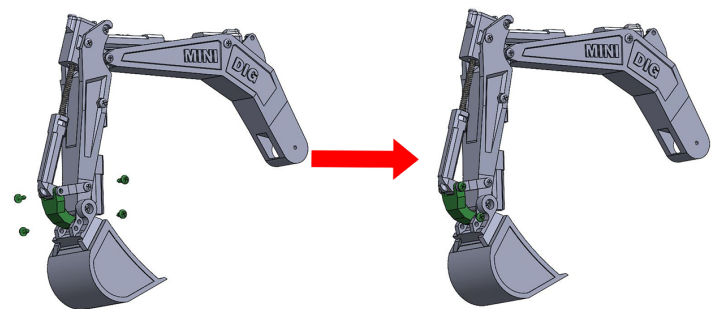
Attachments/Upgrades v



3.) Secure the quick attach-er to the dipper using 2 2x8mm(Or 2x10) screws.



4.) Depending on how much power or speed you want from the bucket secure the push link via the inner slot of the quick attach-er for more speed or the outer one for more power using 2 2x6mm screws on top of that secure the swing arm, push link, and the push rod coming off the upper dipper N20 motor together using 2 2x10 screws preferably or if you don't have those 2x8 will work in a pinch.



COMPLETE AND CONTINUE

Copyright © 2024

USA & United States

ProfessorBoots powered by Shopify - Retail policy - Privacy policy

Terms of service - Shipping policy - Contact information