



V2.0 3D Printed RC Skidsteer



ProfessorBoots

[VIEW IN BROWSER](#)

updated 1. 10. 2023 | published 1. 10. 2023

Summary

When you have 3D printers and development boards, you make a mini Skidsteer.

[Hobby & Makers](#) > [RC & Robotics](#)

Tags: [diy](#) [arduino](#) [esp32](#)

Hey everybody this is V2.0 of the MiniSkidi, this is a fun introduction to robotics if you dont have much experience. Below is a link to a step by step YT build video as well as a link to my website where you can pick up the electrical kit if you feel like supporting the channel. If you have any questions feel free to DM me on here and ill get back to you as soon as possible. Have fun!

Electronics Kit: <https://professorboots.com/products/diy-rc-skidsteer-electronics>

Step by step guide:

ChangeLog:

9/26/2023 Drive Shafts: Increased thickness resulting in much stronger and sturdier drive shafts. Affected parts: Main housing, Wheel, Driveshafts, Axle C-Clips.

9/21/2023 Drive Belt: Adjusted Gap between teeth and made belt smaller overall. HUGE IMPROVEMENT

9/8/2023 C-Clips: Increased Clip thickness from 1.0 to 1.4(Helps keep axle straight which prevents belt from wandering off pulleys.

8/30/2023 Drive Shafts: Increased width of drive splines so the TPU belt sits better

8/26/2023 Main Housing: Larger right arm hole, updated PCB support, slightly larger axles holes for the N20 Motors with Drive axles installed to go in.

8/26/2023 Right Arm: Made the pivot point stronger to eliminate any chance of breaking

8/26/2023 Arm C-Clip: Larger

8/26/2023 Driver Cage: Made the pivot point stronger to eliminate any chance of breaking.

8/26/2023 Motor Cover: Removed hinge material for the larger driver cage hinges.

Model files



Attachments

2 files



forklift-attachment.stl



forklift-attachmentstep.step



Archive

10 files



6-wheel.stl



4-left-arm.stl



21-claw.stl



7-bucket.stl



1-main-housing-21.stl



20-drive-shaft-32.stl



19-drive-shaft-32-no-motor.stl



8-axle-c-clip-20.stl



5-claw-assembly.stl

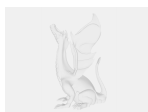


1-white-pla-parts-31.stl

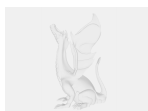


Individual .Step Files

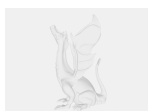
22 files



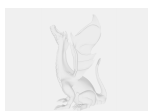
1-main-housing-23.step



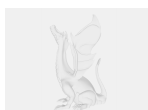
2-right-wheel-well.step



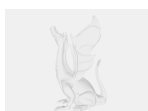
3-left-wheel-well.step



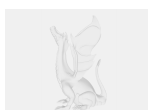
4-left-arm-21.step



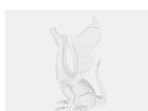
5-right-arm-21.step



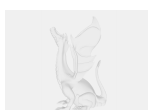
6-wheel-21.step



7-bucket-21.step



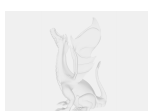
8-axle-c-clip-30.step



9-arm-c-clip-21.step



10-arm-gear-20.step



11-arm-motor-gear-20.step



12-driver-cage-20.step



13-compartment-cover.step



14-300mah-tattu-bat-holder.step



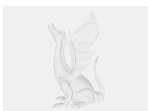
15-motor-restraint-no-battery-holder.step



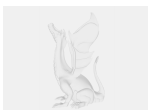
16-arm-motor-restraint.step



17-tire.step



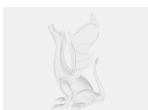
18-drive-belt-40.step



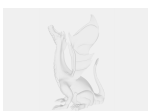
19-drive-shaft-33-no-motor.step



20-drive-shaft-33.step



21-claw-21.step



22-claw-servo-rod.step



Individual .STL Files

22 files



1-main-housing-23.stl



2-right-wheel-well.stl



3-left-wheel-well.stl



4-left-arm-21.stl



5-right-arm-21.stl



6-wheel-21.stl



7-bucket-21.stl



8-axle-c-clip-30.stl



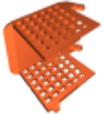
9-arm-c-clip-21.stl



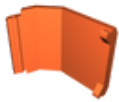
10-arm-gear-20.stl



11-arm-motor-gear-20.stl



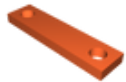
12-driver-cage-20.stl



13-compartment-cover.stl



14-300mah-tattu-bat-holder.stl



15-motor-restraint-no-battery-holder.stl



16-arm-motor-restraint.stl



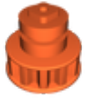
17-tire.stl



18-drive-belt-40.stl



19-drive-shaft-33-no-motor.stl



20-drive-shaft-33.stl



21-claw-21.stl



22-claw-servo-rod.stl



1-white-pla-33.stl



2-black-tpu-parts-20.stl



3-black-pla-parts-21.stl



4-drive-shafts-30.stl



5-claw-assembly-21.stl

License ©

This work is licensed under a
[Creative Commons \(4.0 International License\)](https://creativecommons.org/licenses/by-nc/4.0/)



Attribution-NonCommercial

- ✗ | Sharing without ATTRIBUTION
- ✓ | Remix Culture allowed
- ✗ | Commercial Use
- ✗ | Free Cultural Works
- ✗ | Meets Open Definition